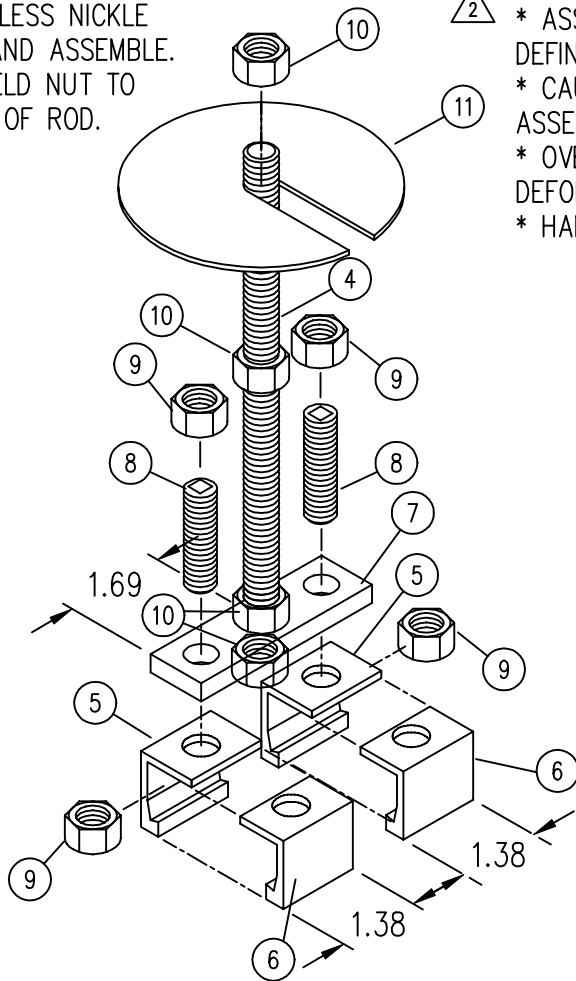
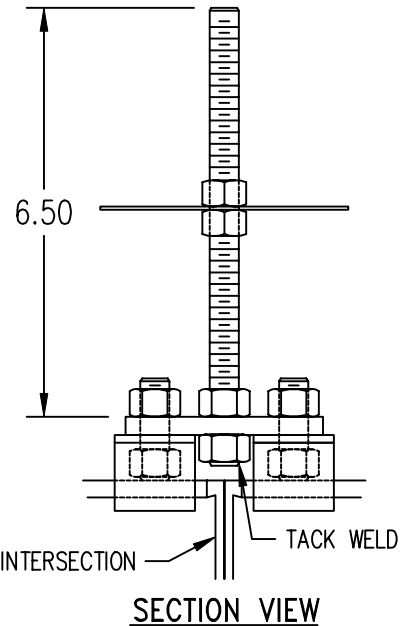


LEVEL	ITEM	* PART NO. =Stocked	QTY. TOTAL	DESCRIPTION	QTY. ONE	Weld Point	DWG. NO.
	1	27-00112		GRID HANGER TYPE 3A INTERSECTION	1		
	2						
	3						
	4	175-72-81		ATR .50 X 7 NC LH GR2 PLAIN	1	*	
	5	27-00024		GRID HANGER 2.6 LH X 1.38"	2		27-00-22
	6	27-00025		GRID HANGER 2.6 RH X 1.38"	2		27-00-22
	7	27-00052		BRKT GRID 1.00 X 3.38 X .50 PL	1	*	27-01-17
	8	131-63-76		BOLT .5 X 2.5 NC SOCSET ELECTRO	2		
	9	125-00-55		NUT .5 X NC FIN HX ZNC	4		
	10	125-50-24		NUT .5 X NC LH HEX PLTD	4		
CP 1	11	175-72-85		PACMAN FILTER HOLD DOWN PLATE	1		27-01-15

NOTE:
ELECTROLESS NICKLE
PARTS AND ASSEMBLE.
TACK WELD NUT TO
BOTTOM OF ROD.




NOTE:
* ASSEMBLY SHOULD BE TIGHTENED TO "SNUG TIGHT" AS
DEFINED BY AISC.
* CAUTION SHOULD BE TAKEN NOT TO OVER-TORQUE THE
ASSEMBLY.
* OVER-TORQUING THE ASSEMBLY CAN RESULT IN
DEFORMATION OF THE ALUMINUM HANGERS.
* HANGERS THAT ARE DEFORMED SHOULD NOT BE USED.



ALLOWABLE LOAD RATING: 1.2 KIPS

TYPE 3A
REQUIRED

FILE NAME: 27-01-12.DWG				TOLERANCES UNLESS OTHERWISE SPECIFIED		DRAWN BY: JAC		 11241 S. E. HIGHWAY 212 CLACKAMAS OR 97015 Phone (503) 557-4500 Fax (503) 557-4501	
REV.	DATE	BY	DESCRIPTION	FRACTIONS : ±1/32		ISSUED ON: 02-10-00		TITLE:	
2	10/01	WR	ADDED NOTES & UPDATED BOM	0.0 : ±0.1		CHECKED BY:		CLEAN-TRAK 2.6	
1	05/30	EJL	CHANGED QUANTITY TO ONE	0.00 : ±0.03		SCALE:		GRID SUSPENSION & FILTER HOLD DOWN AT PERIMETER INTERSECTION	
THIS DRAWING IS THE PROPERTY OF CLEANPAK AND CAN NOT BE REPRODUCED IN WHOLE OR IN PART, NOR DELIVERED TO OTHERS WITHOUT THE EXPRESS WRITTEN PERMISSION OF CLEANPAK.				0.000 : ±0.010		SIZE: A		DRAWING NO.: 27-01-12	
				0.0000 : GIVEN		JOB NO.:		SHEET OF	
				ANGLES : ±0.5°					