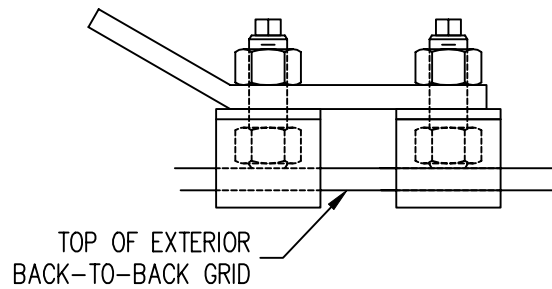
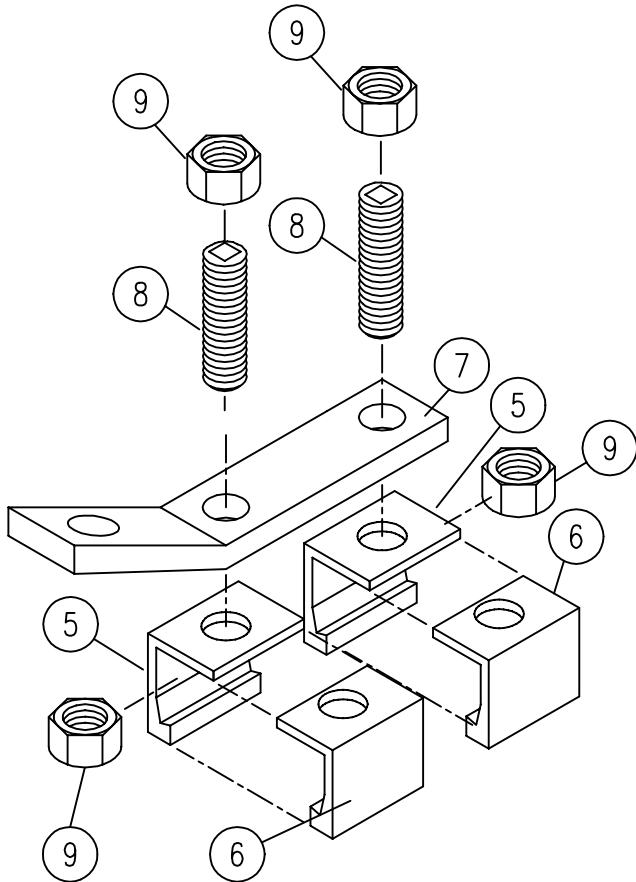


LEVEL	ITEM	* PART NO. =Stocked	QTY. TOTAL	DESCRIPTION	QTY. ONE	Weld Point	DWG. NO.
	1	27-00110		GRID SWAY BRACE ATTACHMENT	1		
	2						
	3						
	4						
	5	27-00024		GRID HANGER 2.6 LH X 1.38"	2		27-00-22
	6	27-00025		GRID HANGER 2.6 RH X 1.38"	2		27-00-22
	7	27-00109		BRKT SWAY 1.00 X 5.38 X .375PL	1	*	
	8	131-63-76		BOLT .5 X 2.5 NC SOCSET ELECTRO	2		
	9	125-00-55		NUT .5 X NC FIN HX ZNC	4		


NOTE:

- 1 * ASSEMBLE THE PARTS ON THE GRID.
- * IN ADDITION, USE A TEMPORARY JAM NUT ON THE ALLEN HEAD SCREW TO DOUBLE JAM NUT THE SCREW.
- 2 * CLAMP THE LEFT AND RIGHT HAND EXTRUSION ASSEMBLY IN THE AREA AROUND THE INTERIOR NUT WITH A VICE GRIP (Vise Grip 11 SP) WHILE TIGHTENING THE ALLEN HEAD SCREW USING A TORQUE WRENCH ON THE JAM NUTS. THE VICE GRIP IS USED TO KEEP THE TWO-PIECE ALUMINUM HANGER ASSEMBLY TOGETHER AND TO KEEP THE INTERIOR NUT FROM TURNING. TIGHTEN THE ALLEN HEAD SCREWS, USING THE JAM NUTS, TO 42 FT-LBS.
- * OVER-TORQUING THE ASSEMBLY CAN RESULT IN DEFORMATION OF THE ALUMINUM HANGERS.
- * HANGERS THAT ARE DEFORMED SHOULD NOT BE USED.



ALLOWABLE LOAD RATING: 1,342 LBS

REQUIRED

FILE NAME: 27-01-09.dwg				TOLERANCES UNLESS OTHERWISE SPECIFIED		DRAWN BY: Jeffc		 11241 S. E. HIGHWAY 212 CLACKAMAS OR 97015 Phone (503) 557-4500 Fax (503) 557-4501	
REV.	DATE	BY	DESCRIPTION	FRACTIONS : ±1/32		ISSUED ON: 2/10/00		TITLE GRID SWAY BRACE ATTACHMENT CLEAN-TRAK 2.6 SWAY BRACING ATTACHMENT AT EXTERIOR OR PERIMETER GRID	
2	12/01	ZC	REVISED NOTES	0.0 : ±0.1		CHECKED BY:			
1	10/01	WR	ADDED NOTES & UPDATED BOM	0.00 : ±0.03		SCALE:			
THIS DRAWING IS THE PROPERTY OF CLEANPAK AND CAN NOT BE REPRODUCED IN WHOLE OR IN PART, NOR DELIVERED TO OTHERS WITHOUT THE EXPRESS WRITTEN PERMISSION OF CLEANPAK.				0.000 : ±0.010		SIZE: A		DRAWING NO.: 27-01-09	
				0.0000 : GIVEN		JOB NO.:		SHEET OF	
				ANGLES : ±0.5°					